

# What's at Stake for People with Disabilities In the State Budget and How You Can Make a Difference



*A virtual training hosted by  
Disability Rights Wisconsin  
March 29, 2023*

**disabilityrights** | WISCONSIN

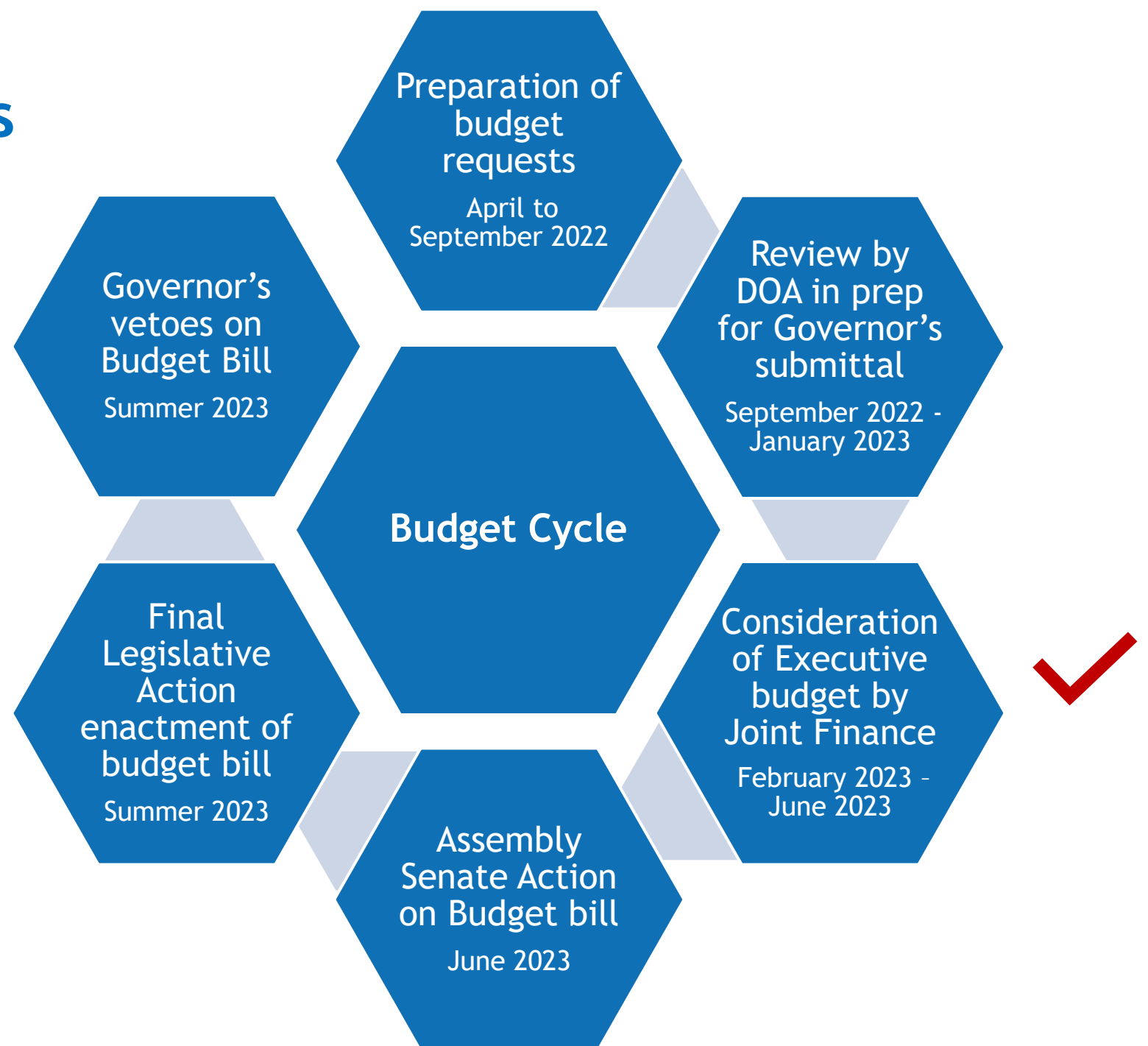
# Our Agenda Today

- ▶ Welcome
- ▶ Share opportunities for you to make a difference in the state budget
- ▶ Provide an overview of disability priorities in the state budget
- ▶ Offer resources to help you get involved
  
- ▶ Our budget webinar team
  - ❖ Barbara Beckert, Director of External Advocacy
  - ❖ Bill Crowley, Supervising Attorney
  - ❖ Phyllis Greenberger, Supervising Advocacy Specialist

# The state budget process: Your Voice Matters

- ▶ The state budget is developed over many months.
- ▶ It funds programs and impacts policies that are important to all of us, and essential for many people with disabilities including mental health needs.
- ▶ There are many opportunities for citizen advocates to influence what gets funded.
- ▶ You and your local networks can make a difference and influence the budget.

# State Budget Process



# Where are we in the state budget?

- ▶ The Governor introduced the first draft of the budget in February.
- ▶ The legislature decided to write their own version of the budget, using the current budget passed two years ago as the starting point (base budget).
- ▶ The legislature's budget "re-do" is led by the 16-member **Joint Finance Committee** (8 Senators, 8 Representatives).
- ▶ This committee takes the lead on adding, revising, and removing items from the state budget bill.

# Joint Finance Committee (JFC) members

## State Senate



Co-Chair  
**Sen. Marklein (R)**

Spring Green



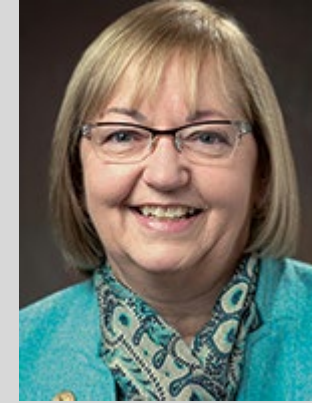
Vice-Chair  
**Sen. Stroebel (R)**

Saukville



Sen. Felkowski **(R)**

Irma



Sen. Ballweg **(R)**

Markesan



Sen. Testin **(R)**

Stevens Point



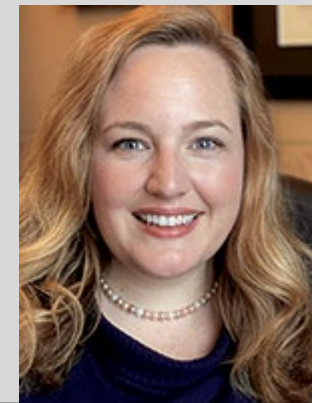
Sen. Wimberger **(R)**

Green Bay



Sen. L. Johnson **(D)**

Milwaukee



Sen. Roys **(D)**

Madison



# Joint Finance Committee (JFC) members

## State Assembly



Co-Chair  
**Rep. Born**  
**(R)**

Beaver Dam



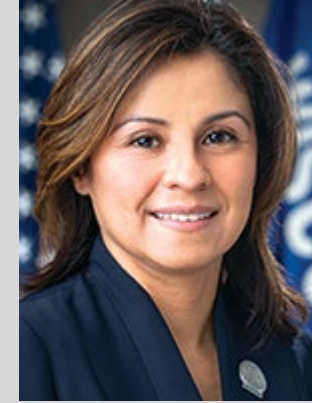
Vice-Chair  
**Rep. Katsma**  
**(R)**

Oostburg



Rep.  
Zimmerman  
**(R)**

River Falls



Rep.  
Rodriguez  
**(R)**

Oak Creek



Rep. Kurtz  
**(R)**

Wonewoc



Rep.  
Dallman **(R)**

Green Lake



Rep. Goyke  
**(D)**

Milwaukee



Rep.  
McGuire  
**(D)**

Kenosha

# Where are we in the state budget?

- ▶ The Legislative Fiscal Bureau published their analysis of the Governor's budget proposal in March.
- ▶ The Joint Finance Committee (JFC) is holding 4 public hearings in April.
- ▶ **All legislators** have an opportunity to influence the state budget during the Joint Finance Committee process.
  - ❖ Your legislator can suggest budget amendments (additions and changes to the budget) to their “budget buddy” on Joint Finance.
- ▶ **All legislators** will vote on the final version of the state budget before it can pass.





# JOINT FINANCE COMMITTEE HEARINGS



## ➤ WEDNESDAY, APRIL 5, 2023

- WAUKESHA COUNTY EXPO CENTER, MAIN ARENA  
WAUKESHA, WI

## ➤ TUESDAY, APRIL 11, 2023

- UW-EAU CLAIRE, DAVIES STUDENT CENTER  
OJIBWE GRAND BALLROOM - EAU CLAIRE, WI

## ➤ WEDNESDAY, APRIL 12, 2023

- GLACIAL CANYON CONF. CTR. - WILDERNESS RESORT  
SANDSTONE MEETING RM. - WISCONSIN DELLS, WI

## ➤ WEDNESDAY, APRIL 26, 2023

- LAKELAND UNION HIGH SCHOOL THEATRE  
MINOCQUA, WI

## ➤ PUBLIC WEB ADDRESS

- [HTTPS://LEGIS.WISCONSIN.GOV/TOPICS/BUDGETCOMMENTS](https://legis.wisconsin.gov/topics/budgetcomments)



# How to Participate in the Public Hearing Process for the State Budget

- ▶ All public hearings will be streamed by WisconsinEye and can be viewed at [WisEye.org/live](http://WisEye.org/live)
- ▶ Options for submitting comments:
  - ❖ Email: [budgetcomments@legis.wisconsin.gov](mailto:budgetcomments@legis.wisconsin.gov)
  - ❖ U.S. mail to:  
Joe Malkasian, Room 305 East, State Capitol, Madison, WI 53702.
  - ❖ Post in the Public Comment Form on JFC website:  
[Joint Committee on Finance Public Comment Website \(wisconsin.gov\)](http://JointCommitteeonFinancePublicCommentWebsite(wisconsin.gov))
- ▶ Attend a Public Hearing and provide public comments. Your legislators may also hold public input sessions.

# Tips for JFC Hearings

- ▶ Plan ahead - information for each site is posted on the JFC Budget Public Comment site: <https://legis.wisconsin.gov/topics/budgetcomments/>
  - ❖ Arrange for transportation
  - ❖ Request accommodations if needed, ASAP.  
Contact Becky Hannah, Legislative Fiscal Bureau,  
Phone: 608-266-3847 Email: [Fiscal.Bureau@legis.wisconsin.gov](mailto:Fiscal.Bureau@legis.wisconsin.gov)
  - ❖ Consider bringing a lunch and something to drink. It's a long day!
- ▶ Arrive early. The hearing begins at 10 AM but there will be a long line to people who arrive early and are waiting to speak.
- ▶ Fill out a registration slip as soon as they are available and hand it in. Speaker order is determined by the order in which you register with some exceptions.
- ▶ Each hearing runs from 10 AM - 5 PM, sometimes later.
- ▶ DRW will staff a table at each hearing to support people with disabilities.

# Speaking at a JFC Hearing: Be Prepared!

- ▶ Write down what you want to say and bring it with you.
  - ❖ Email your comments to the Joint Finance Committee and to your state legislators, as well speaking at the hearing.
- ▶ Each speaker gets about three minutes to speak.
- ▶ Practice - three minutes goes by quickly!
- ▶ Reinforce your message with a slogan. Here are some examples:
  - ❖ *Keep the community promise*
  - ❖ *People can't wait*

# Make your ask



- ▶ **Introduce yourself**
  - ❖ Your name, where you live, your job (if relevant), a few details to establish your credibility and connection to your community.
- ▶ **Introduce your issue and experience**
  - ❖ Introduce your issue and how your issue impacts you, your family, and/or other people with disabilities. Share your personal experience with your issue. A story or example can be powerful.
- ▶ **Make your ask**
  - ❖ Make sure to let your legislator know what you want. Share the budget proposals that are important to you and to your family or agency and ask legislators to support them.

# Biennial Budget: Next Steps

- ▶ **March - early April:** JFC holds briefings with selected state agencies. Dept. of Corrections and Dept. of Transportation invited on March 28<sup>th</sup>.
- ▶ **April:** JFC holds public hearings on the budget.
- ▶ **May - June:** JFC holds executive sessions on AB 43/ SB 70, makes changes, additions, deletions. This is a key time for advocacy
- ▶ **Early June:** JFC votes revised budget bill out of committee; send to full Assembly & Senate. Legislators may make additional changes.
- ▶ **June:** Assembly and Senate vote on the budget bill. Any differences are resolved through a conference committee and a second vote in each house.
- ▶ **Late June/early July:** Upon final passage, the Legislature messages the budget bill to the Governor. He may partially or fully veto the budget bill. The Governor signs the budget act.



# Overview of the Budget and DRW Priorities



# Education for Students with Disabilities

- ▶ Funds special education at 60% in both FY24 and FY25.  
Sum sufficient - even if it costs more than expected, the state would still pay.  
Special education is currently state-funded at around 30%.
- ▶ Increase reimbursement rate for High-Cost Special Education to 45 percent in FY24 and 60 percent in FY25 - sum sufficient.

# School Based Mental Health Services

- ▶ Funding to reimburse for student services professional staff, since they provide much of the mental health support students receive in schools.
  - ❖ Right now, funding covers only social workers. Proposed expansion to include school counselors, school psychologists, and nurses.
- ▶ Funding to reimburse comprehensive school mental health services and programs for students (\$100,000 per district plus \$100 per pupil). Expands and continues the “Get Kids Ahead” program currently funded with COVID relief dollars.

# Children's Long Term Supports

- ▶ Directs the Dept. of Health Services to ensure that any child who is eligible and applies for the Children's Long-Term Support waiver program (CLTS) receives services under the program.
- ▶ Expands early intervention services provided through the Birth to 3 Program to children with a blood lead level over the CDC recommended levels

# Community Based Long Term Care Services

- ▶ Rate increases for paid Direct Service Professionals in Family Care. (\$88.8M over the biennium)
- ▶ Rate increases for personal care workers. (\$88.8M over the biennium)
- ▶ Funding to continue implementation of Caregiver Task Force recommendations.
- ▶ 5% rate increase for Home- and Community-Based Services for Family Care. Continues the 5 % increase provided to HCBS that was part of the American Rescue Plan Act (does not apply to IRIS)
- ▶ Complex Patient Pilot aimed at identifying innovative approaches to complex patient care transitions from acute care providers to long-term care settings.

# Family Caregiving Support

- ▶ Provides paid Family Medical leave for up to 12 weeks paid leave to all self-employed workers and part- and full-time employees working for employers who have more than 50 employees. Payroll contributions would be shared equally by employers and employees.
- ▶ Expands who can use Family and Medical Leave to grandparents, grandchildren, and siblings. Removes the reference to child, allowing workers to use FMLA for people of any age.
- ▶ Creates a Family Caregiver tax credit that allows reimbursement for out of pocket costs directly related to caring or supporting adult family members who need help with daily living activities. The maximum annual credit per family member is \$500.
- ▶ Increase the Alzheimer's Family and Caregiver Support Program (AFCSP) funding by \$1 million GPR over the biennium (\$500,000/\$500,000) and increase the income eligibility threshold from \$48,000 to \$60,000 annually.
- ▶ Increases respite funding by 200K.



# Aging and Disability Resource Centers

- ▶ Increases funding for Aging and Disability Resource Centers
- ▶ Provides a 0.5 FTE position to provide caregiver support services in every county.
- ▶ Support the ongoing costs of the tribal Aging and Disability Resource Specialists (ADRS).
- ▶ Funding to create a centralized ADRC website and database providing access to information about long-term care supports and services

# Addressing Abuse and Neglect

- ▶ Increases funding for Adult Protective Services (APS) for training, needs assessments for tribal APS, training grants for guardianship training and elder justice - \$4,138,300 GPR/yr. 1 and \$9,499,200 GPR/yr. 2
- ▶ Increases funding for DHS's Division of Quality Assurance to allow for a 25% investigation rate to respond to safety complaints, including complaints involving 1-2 bed Adult Family Homes. Funds an additional 32 positions in the Bureau of Assisted Living.
- ▶ Increases staffing (11 FTE positions) for the Office of Caregiver Quality to support misconduct investigation and background check program.
- ▶ Creates a program to promote the protection of elders and support the statewide elder abuse hotline - \$250,000 GPR/yr. 2. (Justice Budget). Note: Does not include funding to expand the Hotline to people with disabilities 18-59.
- ▶ Funds an additional three *positions* for the Board on Aging State Long Term Care Ombudsman due to increasing demand for its services.

# Intensive Treatment Program Expansion

- ▶ Expands the Intensive Treatment Program (ITP) at Northern Wisconsin Center, to serve up to 12 additional residents. The Governor proposes funding for an additional 92 staff positions.
- ▶ ITP serves people ages 14 and older with an intellectual disability and co-occurring mental health or behavior disorder.

# Medicaid Expansion

- ▶ Expands coverage to approximately 90,000 Wisconsinites, ~30,000 uninsured
- ▶ Would provide affordable coverage to Wisconsinites with income up to 138 percent of FPL
- ▶ Will generate saving of \$1.6 billion due to enhanced federal funds
- ▶ Wisconsin is one of only 11 states that have not chosen to expand Medicaid

## **Medicaid Investments Linked to Savings from Expansion:**

- ▶ \$531.0M Increase to Acute Care Hospital Access Payments
- ▶ \$7.0M Increase to Critical Access Hospital Access Payments
- ▶ \$20.0M Increase to Supplements for Pediatric Teaching Hospitals
- ▶ \$68.1M Increase to Hospital Rates
- ▶ \$189.1M Increase for Primary Care Physicians

# Access to Dental Care

- ▶ Funding for a grant to support community dental health coordinators across the state - \$300,000 GPR/yr. 1 and \$600,000 GPR/yr. 2
- ▶ Creates a new license for dental therapists to increase the number of dental providers and dental services provided across the state, especially in shortage areas.
- ▶ Funds expansion of Marquette University Dental School and Childrens Wisconsin dental clinic.

# Peer Delivered Services

## Peer Recovery Centers Expansion

- ▶ Increase funding for 8 existing centers from \$30K to \$50K per year
- ▶ Fund two new centers at \$50K per year

## Peer Run Respite

- ▶ Provides GPR support for Peer-Run Respite Center for Veterans.
- ▶ ARPA dollars will fund Wisconsin's 5 Peer Run Respite for the 2023 - 2025 biennium

## Medicaid Coverage for Certified Peer Specialists

- ▶ Proposes a statutory language change to include certified peer specialists and certified parent peer specialists as Medicaid eligible service providers



# Crisis Services

- ▶ Funding for two *Crisis Urgent Care and Observation Centers*
  - ❖ Would serve as regional crisis receiving and stabilization facilities.
  - ❖ Statutory Authority and Funding
  - ❖ \$10.1M GPR for 2 centers and 1.0 FTE

# Community Services

- ▶ **Community Support Program**
  - ❖ Funds the nonfederal share of the Medicaid Community Support Program which is currently funded by counties
- ▶ **Psychosocial Rehabilitation Services benefit**
  - ❖ Allows providers in addition to counties to receive Medicaid reimbursement
- ▶ **Forensic Assertive Community Treatment Teams:** funding to establish two teams to support people with a serious mental illness who are justice involved.
- ▶ **Opening Avenues to Reentry Success:** additional funding for expansion so the program is statewide (2 FTE positions)

# Suicide Prevention

- ▶ 988 Suicide and Crisis Lifeline Support: expand staffing and resources to support these services, including funds to maintain the Lifeline call centers
  - ❖ \$3.0 GPR
  - ❖ \$9.9M projected costs in 2023-25; federal grants will fund remainder
- ▶ Establish a Suicide Prevention Program - \$1M GPR
  - ❖ Coordinate suicide prevention efforts across the state, provide educational materials, and public awareness campaigns

# Deaf, Hard of Hearing, & Deaf-Blind Behavioral Health Treatment Program

- ▶ \$1.9M GPR to contract with a provider to provide culturally and linguistically appropriate direct behavioral health services for individuals who are deaf, hard of hearing, or deaf-blind.
- ▶ Services must be by health care providers fluent in American Sign Language and aware of the culturally unique difficulties experienced by individuals who are deaf, hard of hearing or deaf-blind.

# Substance Use Disorder Services

- ▶ Residential Substance Use Treatment Room and Board Costs
  - ❖ Provides 100% GPR funding to allow Medicaid to cover room and board costs
- ▶ Develop integrated behavioral health stabilization, intoxication monitoring, detox facilities.
- ▶ Supports the development of two facilities by expanding Medicaid benefits to include these new facilities. - effective July 2025
- ▶ NARCAN distribution - \$4M GPR
- ▶ Stimulant Treatment/Prevention - \$3.3M GPR
- ▶ Addiction Treatment Platform Funding - \$60K GPR

# Behavioral Health: Children and Youth

## Psychiatric Residential Treatment Facilities

- ▶ New provider type serving children and youth with behavioral health treatment needs
- ▶ Medicaid reimbursed
- ▶ Funding for one 25 bed facility
  
- ▶ Mendota Juvenile Treatment Center Expansion
  - ❖ 174 FTE - 65 new beds

**Office of Children's Mental Health Staff - 1.0 FTE**

# Other Medicaid Rate Increases

- ▶ Autism Services
- ▶ Outpatient Mental Health and Substance user disorder services
- ▶ Child/Adolescent Day Treatment

# Workforce Initiatives

- ▶ Qualified Treatment Trainee Grant Program
  - ❖ \$1.576M GPR in FY 25 to sustain current funding levels through the 2023-25 biennium
- ▶ WisCaregiver Careers - \$8M increase to support recruitment, training, retention of certified nursing assistants
- ▶ Health Care Provider Innovation Grants - \$22.5M for health care and long term care providers to implement innovative solutions for worker recruitment and retention
- ▶ Expands Child Psychiatry Consultation Program into a broader mental health consultation program. Increase annual funding from \$2M to \$4M



# Corrections Provisions Related to Treatment and Re-entry

- ▶ Funds Expansion of Opening Avenues to Reentry Success (OARS)
- ▶ Funding to expand treatment capacity in the Earned Release Program and substance use disorder programming.
- ▶ Expands access to Medication Assisted Treatment (MAT) and funds a pharmacist and physician position.
- ▶ Expands Alternatives to Revocation (ATR) residential community capacity by 100 beds.

# Youth Justice

- ▶ Raises the age for adult court to 18 and returns 17 year-olds to the juvenile court system
- ▶ Creates a sum sufficient appropriation to reimburse counties for the increased costs associated with raising the age
- ▶ Provides funding to develop a youth justice data and reporting system and to support continued licensing costs for the Youth Assessment Screening Instrument(YASI)
- ▶ Provides funding for bonuses to counties operating secured residential care centers for children and youth(SRCCCY) that serve more than one county

# Creates a Juvenile Justice Reform Committee

- ▶ Creates a Juvenile Justice Reform Committee charged with studying and providing recommendations to DCF and DOC on reforms including:
  - ❖ Increase the minimum age of delinquency and eliminate original adult court jurisdiction over juveniles
  - ❖ Modify waiver procedures for adult court jurisdiction over juveniles
  - ❖ Create a blended juvenile and adult sentence structure for certain juvenile offenders to replace the serious juvenile offender (SJO) program
  - ❖ Prohibit placement of a youth in a juvenile detention facility for a status offense and limit short-term holds in detention to cases in which there is a public safety risk.

# Transportation

- ▶ Increase general Mass Transit Aids by 4% in each year of the budget
- ▶ Increase Paratransit Aids by 4% in each year of the budget
- ▶ Creates a Transit Capital Assistance Grant Program
- ▶ Allow local government to collaborate to create and fund Regional Transit Authorities
- ▶ Increase funding for Specialized Transit Assistance Program (s. 85.22) by \$143,900 SEG funds/yr. 1 and \$309,300 SEG/yr. 2
- ▶ Increase funding in each year of the budget to fund coordination of services for non-drivers
- ▶ **Disability advocates support:** increase funding by 10 - 20% for existing Mass Transit, Paratransit, Specialized Transit (85.22), and Mobility Management (85.21)

# Voting Rights

- ▶ Creates the Office of Election Transparency and Compliance within the WI Election Commission (WEC) to support Election Administration.
- ▶ Automatic Voter Registration: Directs WEC to work with the Department of Transportation to begin automatic voter registration.
- ▶ Returns the residency requirement for voting to 10 days; it is currently 28 days.
- ▶ Early Canvassing of Absentee Ballots: Authorizes a county or municipal clerk to begin the canvassing of absentee ballots on the day before an election.
- ▶ Extends the In-Person Absentee Voting Period by eliminates the current 14 day restriction.
- ▶ Requires polling places to post a voter bill of rights.
- ▶ Reinstates provisions that required high schools to be used for voter registration for students and staff.
- ▶ Creates a grant program for municipalities to purchase Badger Books. Badger Books are an electronic version of the voter list used at polling places.

# Voting Rights

## Disability Advocates support:

- ▶ Fund transportation for voting related activities.
- ▶ Provide funding to expand the Wisconsin Election Commission Polling Place Accessibility Audits and Accessibility Supplies programs.
- ▶ Expand service hours at the Dept. of Motor Vehicle (DMV) locations and add mobile sites to improve access to photo ID so people with disabilities can exercise their right to vote
- ▶ Provide equal access to absentee voting by creating a screen reader accessible ADA compliant absentee ballot.

# Employment

- ▶ Social security disability insurance payments.
  - ❖ Repeals the current prohibition that any Unemployment Insurance claimant who receives a Social Security Disability Insurance (SSDI) payment is ineligible for Unemployment Insurance benefits.
  - ❖ Instead, would require DWD to reduce a claimant's benefit payments by the amount of SSDI payments

# Options for Action

- ▶ Call your legislators office and share your budget priorities.
  - ❖ You can leave a voicemail anytime.
- ▶ Email your legislators. Staffers keep track of constituent emails.
- ▶ Meet your legislator in the district or at the Capitol.
  - ❖ Invite legislators to attend a community event or visit your agency.
  - ❖ Submit written comments to JFC on their website or through email.
- ▶ Like your legislators' social media pages (Facebook, Twitter) and comment on budget related posts.
- ▶ Write a letter to the editor.
- ▶ Attend a JFC hearing or other public hearing and testify on your priorities.



# Who represents me in Wisconsin's legislature?

<https://legis.wisconsin.gov/>



The screenshot shows the Wisconsin State Legislature website. At the top left is the Wisconsin State Capitol dome. The main header reads "WISCONSIN STATE LEGISLATURE". To the right is a search bar with the text "Search everything here" and a "Search" button. Below the header is a navigation menu with links for "HOME", "SENATE", "ASSEMBLY", "COMMITTEES", "SERVICE AGENCIES", and "HELP". A large mural of a bearded man holding a tablet, labeled "LEGISLATION", is on the left. On the right, a vertical menu lists: "Today in the Legislature", "Senate", "Assembly", "Law and Legislation", "Administrative Rules", and "More Information". At the bottom, there are three buttons: "NOTIFICATION SERVICE" with an envelope icon, "COMMITTEE SCHEDULE" with a calendar icon, and "ADMIN RULES CALENDAR" with a book icon. A red circle highlights a section titled "WHO ARE MY LEGISLATORS?". This section contains a text input field labeled "Enter your address", a "Find Your Legislator" button, and a "Find by Map" button with a magnifying glass icon over a map.

WISCONSIN STATE LEGISLATURE

Search everything here Search

HOME SENATE ASSEMBLY COMMITTEES SERVICE AGENCIES HELP

Today in the Legislature

Senate

Assembly

Law and Legislation

Administrative Rules

More Information

NOTIFICATION SERVICE ✉

COMMITTEE SCHEDULE 📅

ADMIN RULES CALENDAR 📖

**WHO ARE MY LEGISLATORS?**

Enter your address

Find Your Legislator

Find by Map

# Contacting Policymakers

- ▶ Who Are My Legislators?” on [Wisconsin State Legislature Home Page](#)
- ▶ Call the Legislative Hotline at 1-800-362-9472
- ▶ Joint Committee on Finance:  
<https://docs.legis.wisconsin.gov/2023/committees/joint/2640>
- ▶ JFC website:  
<https://legis.wisconsin.gov/topics/budgetcomments/>
- ▶ JFC email to provide budget input:  
[budgetcomments@legis.wisconsin.gov](mailto:budgetcomments@legis.wisconsin.gov)

# Resources to learn about the budget

- ▶ 2023 - 2025 Executive Budget: [DOA 2021-23 Executive Budget \(wi.gov\)](#)
- ▶ Budget Bill: <https://docs.legis.wisconsin.gov/2023/proposals/ab43>
- ▶ Department of Health Services: [Governor Evers' Proposed 2023-2025 Budget | Wisconsin Department of Health Services](#)
- ▶ [2023 Joint Committee on Finance \(wisconsin.gov\)](#) sign up for notifications
- ▶ WI [Legislative Fiscal Bureau \(wisconsin.gov\)](#)  
LFB Summary of Gov. Evers budget proposal: [2023-25 Biennial Budget \(wisconsin.gov\)](#)

# Spring Election: April 4, 2023



## What's on the Ballot?

- State Supreme Court seat - will serve for 10 years
- Court of Appeals Districts 1 and 4
- Circuit Court
- Special Election Senate District 8

Local races depending on where you live:

- County Executive, County Board,
  - Mayor, City Council, Town or Village President and Board
  - Municipal Judge
  - School Board
- 
- Constitutional amendments and advisory referendum
  - View your ballot at [Myvote.wi.gov](https://myvote.wi.gov)

# Know Your Voting Rights!



## **You have the right to:**

- Vote privately and independently.
- Access the polling place, including an accessible route to enter the building .
- Assistance stating your name and address when requested to do so by the poll worker. Or you may provide your information in writing to poll workers or assistants.
- Assistance mailing or returning your ballot.
- Assistance marking your ballot. If voting in person, you can bring someone with you or ask a poll worker for assistance. Poll workers are required to assist a voter upon request.
- All polling places are required by law to have an accessible voting machine. This is not required for early voting.
- If a voter cannot enter the early voting location or polling place due to disability, Wis. Stat. § 6.82(1) requires that curbside voting be available.
- People with disabilities have the right to receive assistance with all aspects of voting, including having a person of their choice deliver their ballot to their clerk or polling place.



# Make Sure You Vote in the April 4<sup>th</sup> Election!



## Help is Available!

- Disability Vote Coalition:  
<https://disabilityvote.org/>
- Disability Rights Wisconsin Voter  
Hotline:  
844-347-8683 [info@disabilityvote.org](mailto:info@disabilityvote.org)
- My Vote Wisconsin: [Myvote.wi.gov](https://myvote.wi.gov)
- **Wisconsin Elections Commission:**  
866-VOTE-WIS/868-3944
- Nonpartisan voting and candidate  
information:
  - Vote 411 <https://www.vote411.org/>
  - Ballotpedia <https://ballotpedia.org/>